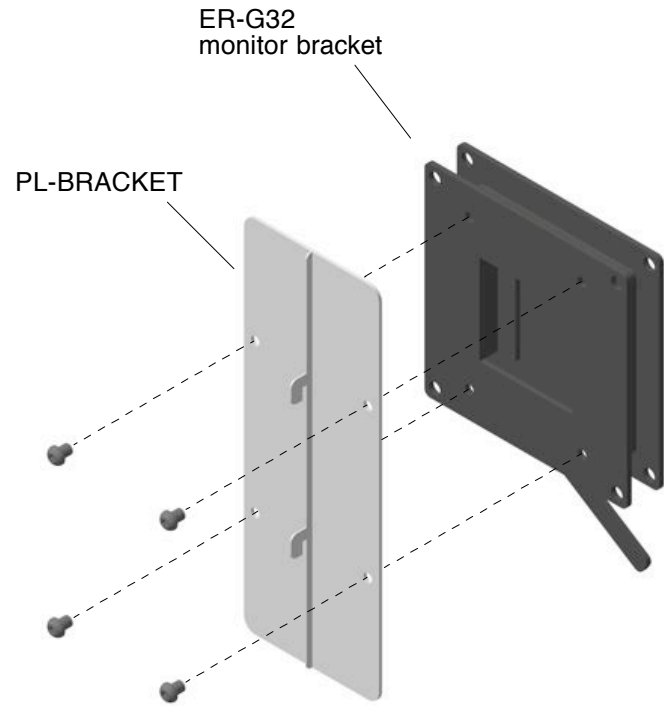


# STEP 1

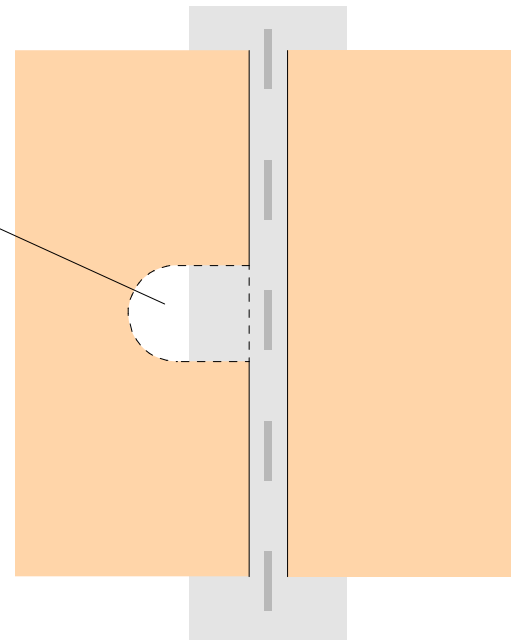


If it's not already assembled, attach the bracket with two hooks to the LCD mount plate as shown.

# STEP 2

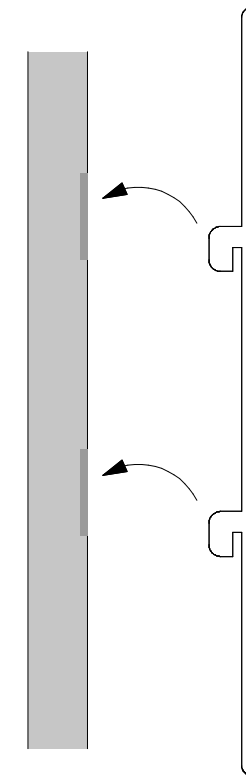
cut out a notch slightly larger than the LCD power & signal cables

**OPTIONAL:** Rather than cut into the panel, it can be pulled away from channel bar and cables can be passed thru the gap. The bump created can be hidden behind the mounted monitor.



Cut a small notch out of the edge of one panel to allow the LCD cables to pass through to back. Make sure notch is larger enough to clear the channel bar, and that it's location will be hidden behind the mounted LCD screen.

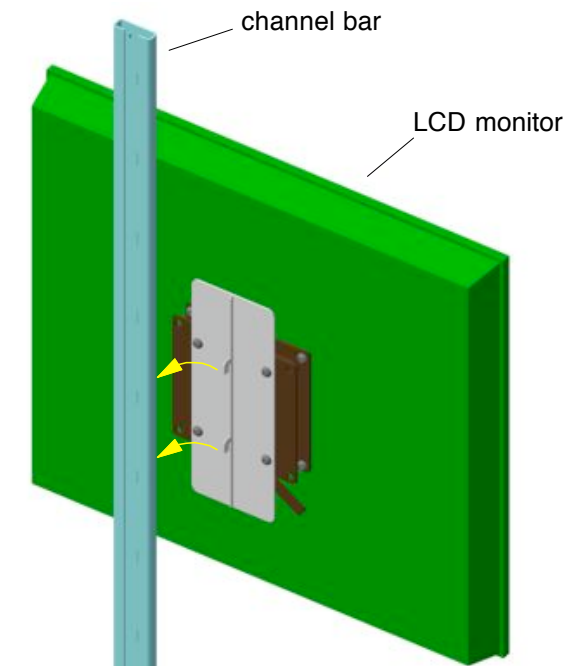
# STEP 3



Mount LCD to channel bar by sliding the hooks of the bracket into the slots on the channel bar as shown here and below.



Mounted LCD shown here.



This information is confidential and proprietary to Abex Exhibit Systems and shall not be reproduced or further disclosed to anyone other than Abex employees without written authorization from Abex Exhibit Systems.

Revisions				Description	Date	Scale	Engineer
Zone	Rev.	Description	Date				
				Pop-up Monitor Assembly	3/28/2008	n/a	ASawyer
				Part #	Product Line	Revision	QC Approval:
				PL-MOUNT	MOD	00	Production Approval: